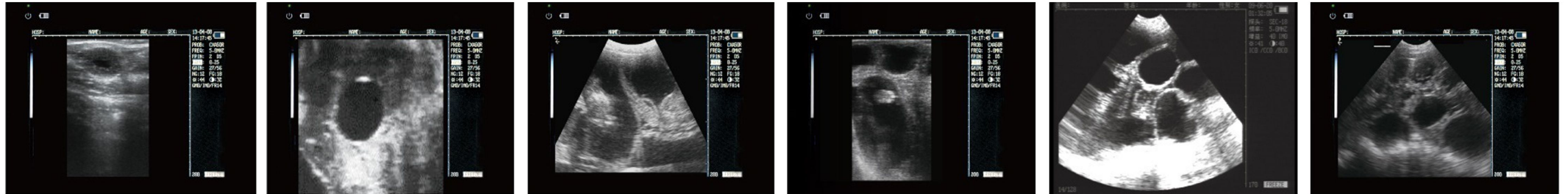


PL-3018I

Veterinary Handheld Ultrasound Scanner



Applications:

- Ovine, Bovine, Equine, Swine, Alpaca, Feline, Canine, Rabbit, Fish, Snake and etc.

Features:

- 5" TFT-LCD, wide visual, high brightness, high contrast, image clear and exquisite.
- Hand-held design, smart and light, easy to carry, convenient for detection.
- OB measurement: EDD and GA for Bovine, equine, swine, alpaca, ovine, goat, canine, feline, rabbit.
- 128 frames permanent storage, 256 frames cine loop.
- Adopted AC and DC to supply power, lithium battery capacity 2600mA which can make machine work more than 180 minutes.



Specifications:

- Detect Depth(mm): 140
- Blind zone(mm): 3
- Monitor size: 5 inch TFT-LCD
- Display mode: B, B+B, B+M, M, 4B
- Image gray scale: 256
- Image storage: 128
- Cine loop: 400 frame
- Scan depth: 120mm-220mm
- Image flip: up/down, left/right
- Focus position: Adjustable
- Posture mark: 15
- Image process: Histogram, color encode, gama, image smooth
- Probe frequency: Adjustable (3 point each probe)
- Frame correction: Adjustable
- Measurement: distance, circumference, heart rate, EDD, area, volume, GA and etc.
- Notation: date, time, name, sex, age, full screen words edit and etc.
- Output report: regular
- Output: USB2.0, VIDEO(PALD, NTSC)
- Charging method: adapter, battery
- Adapter rating: 100-240V~, 50-60Hz, 70VA
- Battery: 2600mAh, continuous work: ?3 hours
- Machine dimension: 230mm(L)x120mm(W)x38mm(H)
- Net weight: 700g

Standard Configuration:

- Scanner Body: 1pc
- Li-ion Battery: 1pc
- 3.5MHz Convex Probe: 1pc
- Charger with a Set of Wires: 1set
- Wrap Bag: 1pc
- CD: 1pc
- Bottle of USG gel: 1pc
- Transportation Case: 1pc
- User Manual: 1pc

Optional:

- 5.0MHz Micro-convex Probe
- 6.5MHz Rectal Probe
- 6.5MHz Rectal Probe with Rod
- 5MHz Linear Probe
- Goggle
- Li-ion Battery
- Rod of Rectal Probe
- Car Charger
- Charging Adaptation Wire (containing power cord)



Xuzhou Palmory Electronics Co., Ltd



Addr: No.4 Building, Zhongkai City Light, West Huaihai Road, Xuzhou City, Jiangsu Province, China
 Tel: 86-516-83892808 , Fax: 86-516-83892898
 E-mail: ultrasoundscanner@palmory.cn
 Website: www.palmoryultrasound.com